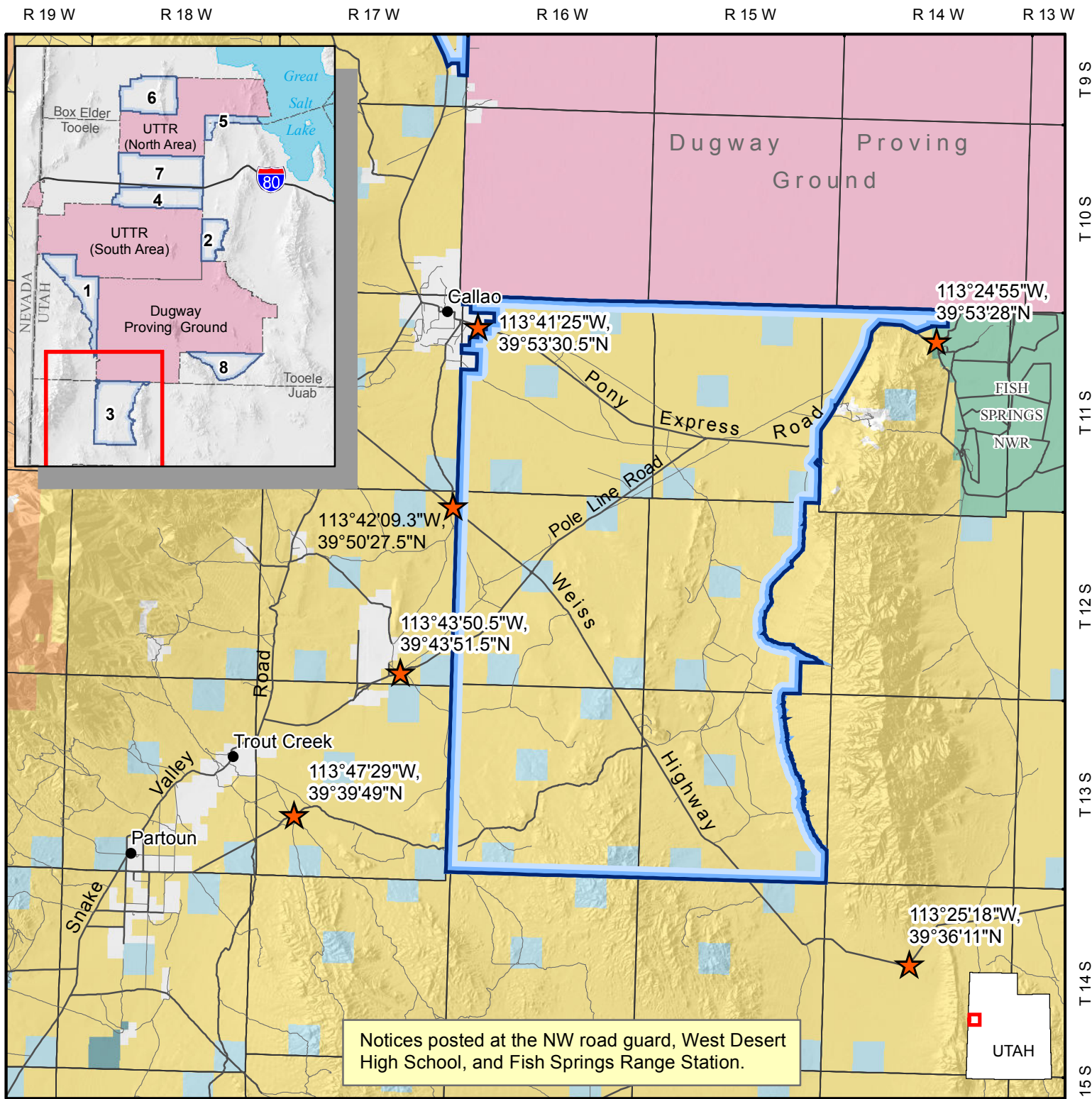


# Attachment 4 Buffer Area 3 - Notice Posting and Road Guard Locations



Notices posted at the NW road guard, West Desert High School, and Fish Springs Range Station.

- |  |   |
|--|---|
| <ul style="list-style-type: none"> <li> Notice Postings and Road Guards</li> <li> UTTR Temporary Closure Area</li> <li> Primary Road</li> <li> Secondary Road</li> </ul> | <p><b>Land Status</b></p> <ul style="list-style-type: none"> <li> Bureau of Land Management</li> <li> Indian Reservation (IR)</li> <li> Military Reservations</li> <li> Private</li> <li> State</li> <li> State Wildlife Reserve/Management Area</li> <li> US Fish &amp; Wildlife National Wildlife Refuge</li> </ul> |
|--|---|



January 29, 2018

No warranty is made by the Bureau of Land Management as to the accuracy, reliability, or completeness of these data for individual use or aggregate use with other data.